

# Driver Replacement

## Overview

This document details the procedure for replacing drivers in installed Mindset Pointform fixtures.

## Information

### Important

- Read all instructions including wiring and mechanical details before the start of the installation.
- Install in accordance with the local and national building and electrical codes.
- Contact factory if you require assistance or have questions.
- CONSULT A QUALIFIED ELECTRICIAN TO ENSURE CORRECT BRANCH CIRCUIT CONDUCTOR. / CONSULTER UN ÉLECTRICIEN QUALIFIÉ POUR VOUS ASSURER QUE LES CONDUCTEURS DE LA DÉRIVATION SONT ADÉQUATS.



### Tools Required

#### Tools:

- Phillips Screwdriver

#### Materials:

- n/a



### Safety Warnings

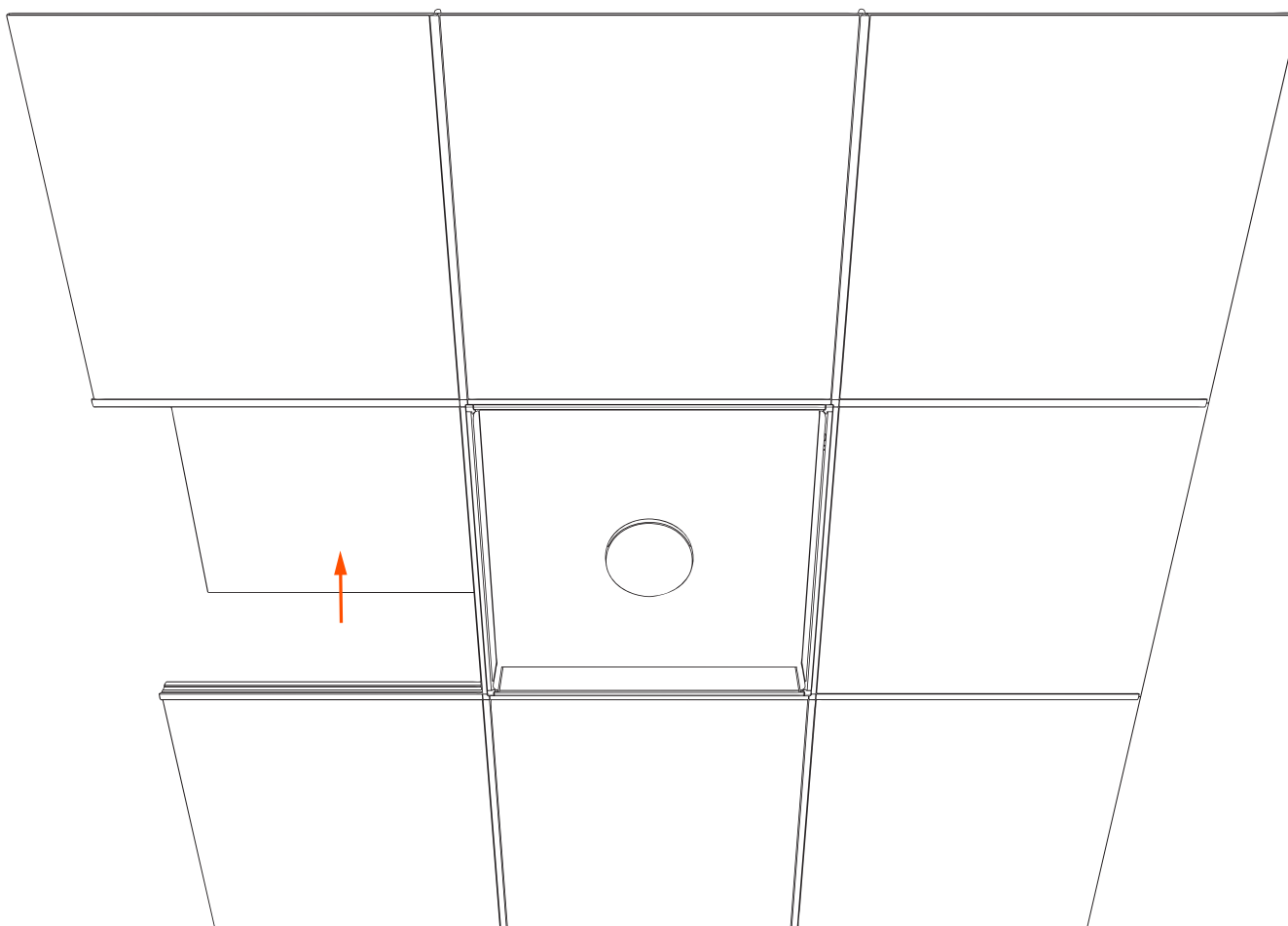
- **Shock hazard!** Fixtures must be connected to building ground via provided ground wire before connecting to main supply power.
- Disconnect or turn off power supply before attempting any installation maintenance or servicing operations.

## Driver Replacement

### Pointform (T-Grid System)

#### 1 Remove Ceiling Tile to Gain Access from Above

1. Remove tile adjacent to fixture to gain access from above.

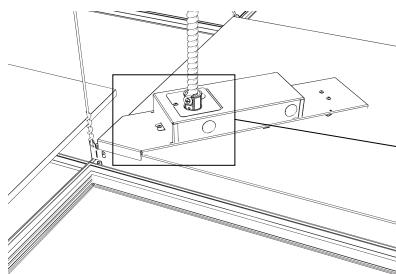


## Driver Replacement

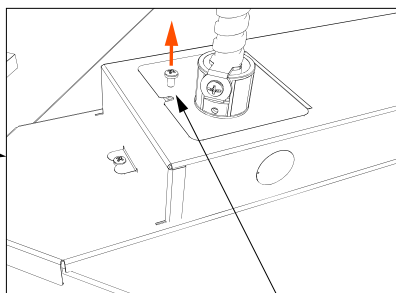
### 2 Remove Screw Holding WAC to the Driver Box

1. Access the area above the fixture.
2. Remove the screw to detach the WAC.
3. Carefully remove the WAC and disconnect wires from the driver enclosure.  
**TIP:** Snap a photo of the wire connections prior to disconnect to use as a reference when reinstalling the replacement driver and wires.
4. Disconnect power and low voltage from the 2-Lever WAGOs. Then, disconnect the ground wire from the 3-Lever WAGOs. Unscrew the enclosure from the mount tray.
5. Slide the mount tray to its stopping point, then lift and set it aside.
6. Remove the screws securing the driver to the mounting tray.

1

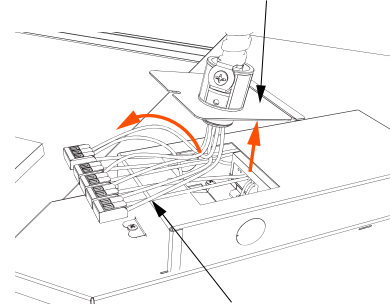


2



REMOVE SCREW TO  
REMOVE THE WAC FROM  
DRIVER ENCLOSURE

3

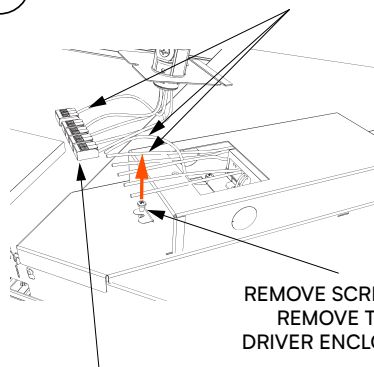


FIRST, SAFELY  
REMOVE THE WAC FROM  
THE ENCLOSURE

NEXT, CAREFULLY  
PULL WIRES OUT OF  
ENCLOSURE

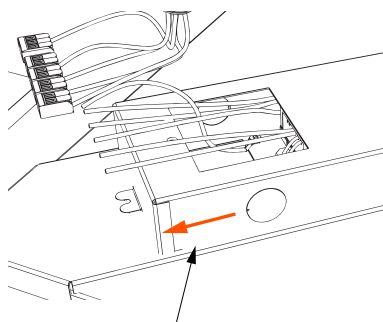
4

**IMPORTANT!**  
DISCONNECT GROUND HOOK UP  
WIRES CONNECTED TO THE  
3-LEVER WAGO **LAST**



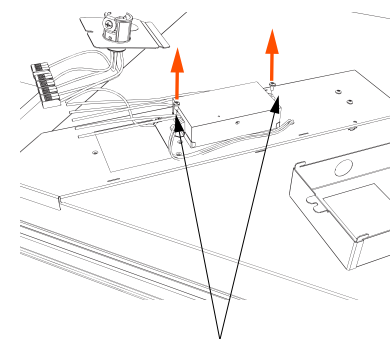
DISCONNECT POWER AND  
LOW VOLTAGE HOOK UP  
WIRES CONNECTED TO  
2-LEVER WAGOS FIRST

5



SLIDE DRIVER ENCLOSURE  
UNTIL IT STOPS AND  
CAREFULLY LIFT OFF THE  
MOUNT TRAY AND REST ASIDE

6



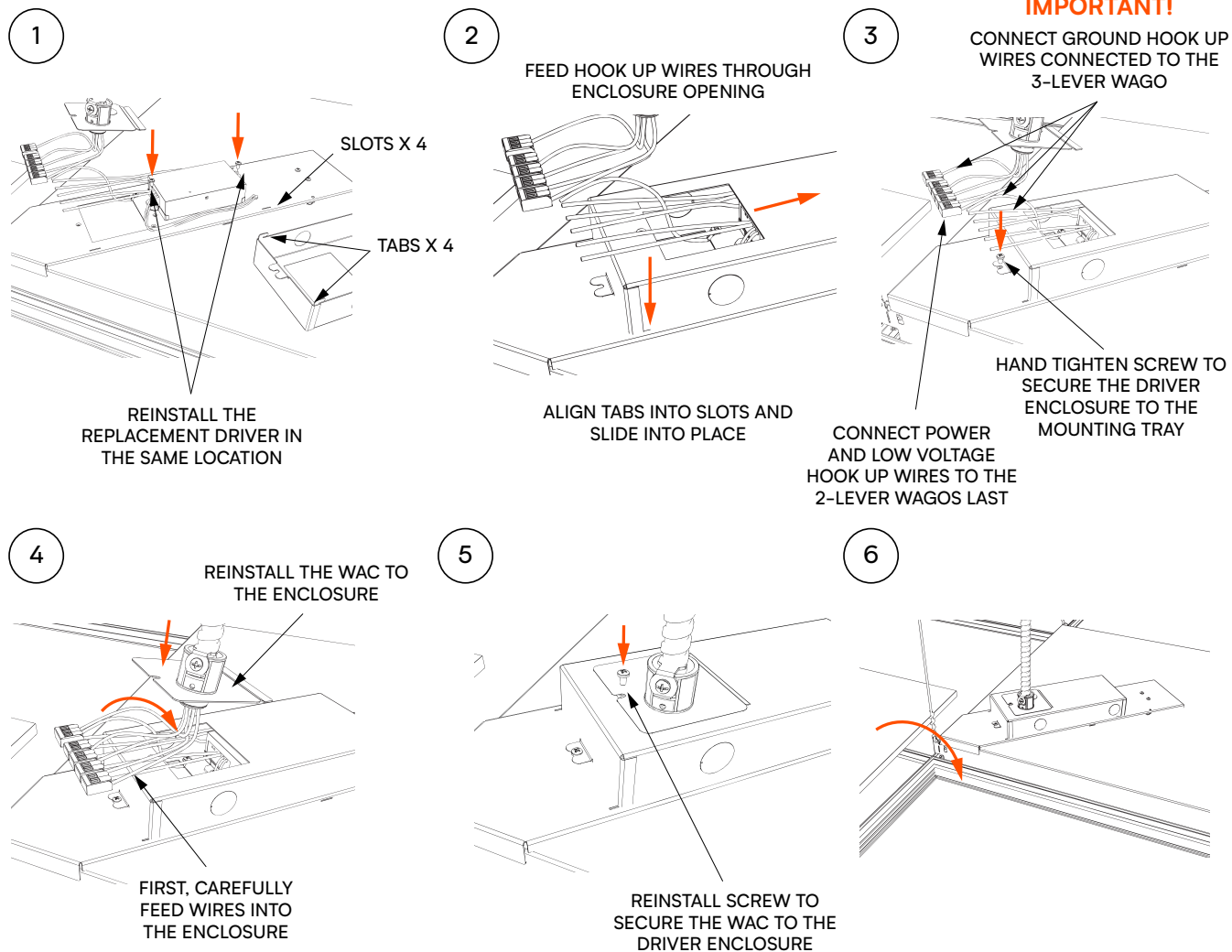
REMOVE THE SCREWS  
SECURING THE DRIVER TO  
ALLOW IT TO BE REMOVED

## Driver Replacement

### 3 Prepare Replacement Driver and Install

With the faulty driver free, safely remove the hook up wires from faulty driver and reinstall on replacement driver.

1. Reinstall the replacement driver in the same location with the same screws.
2. Gather the driver enclosure, carefully feed wires through the opening. Align tabs on the enclosure into slots on the mounting tray. Slide enclosure into place and secure with screw.
3. First, reconnect the ground wires to the 3-Lever WAGO, next connect the power and low voltage to the 2-Lever WAGOs.
4. Feed wires back into the enclosure and reinstall the WAC.
5. Secure the WAC in place with the screw.
6. Reinstall the ceiling tile.

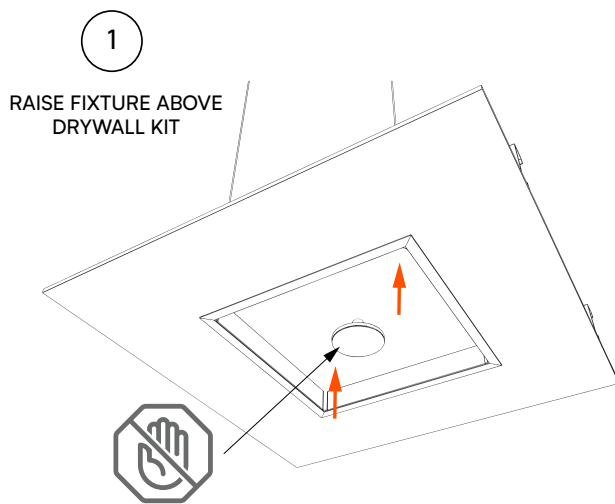


# Driver Replacement

## Pointform (Sheetrock)

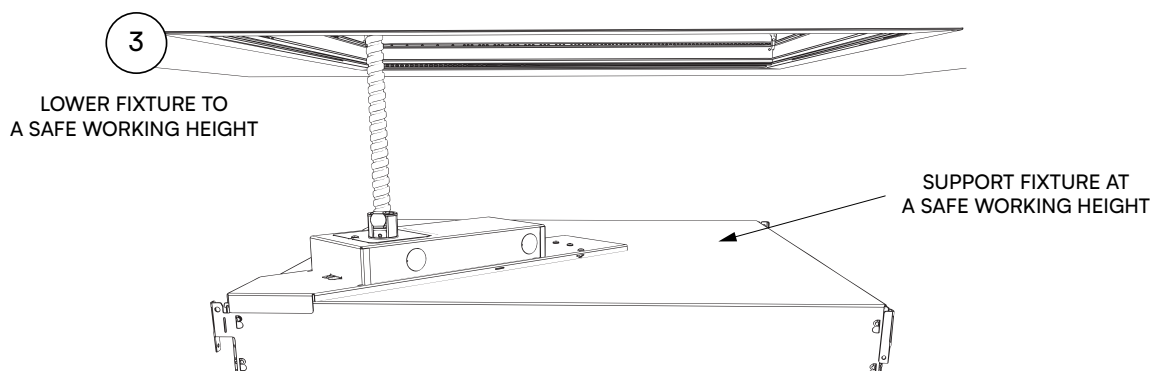
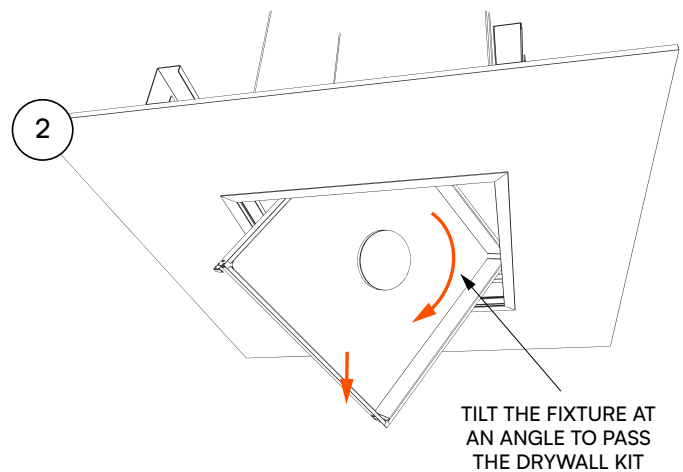
### 1 Remove Fixture from Drywall Kit

1. Carefully raise the fixture above the drywall kit.
2. Tilt the fixture at an angle to allow it to pass the drywall kit.
3. Lower below the ceiling to a safe working height and support fixture.



#### IMPORTANT!

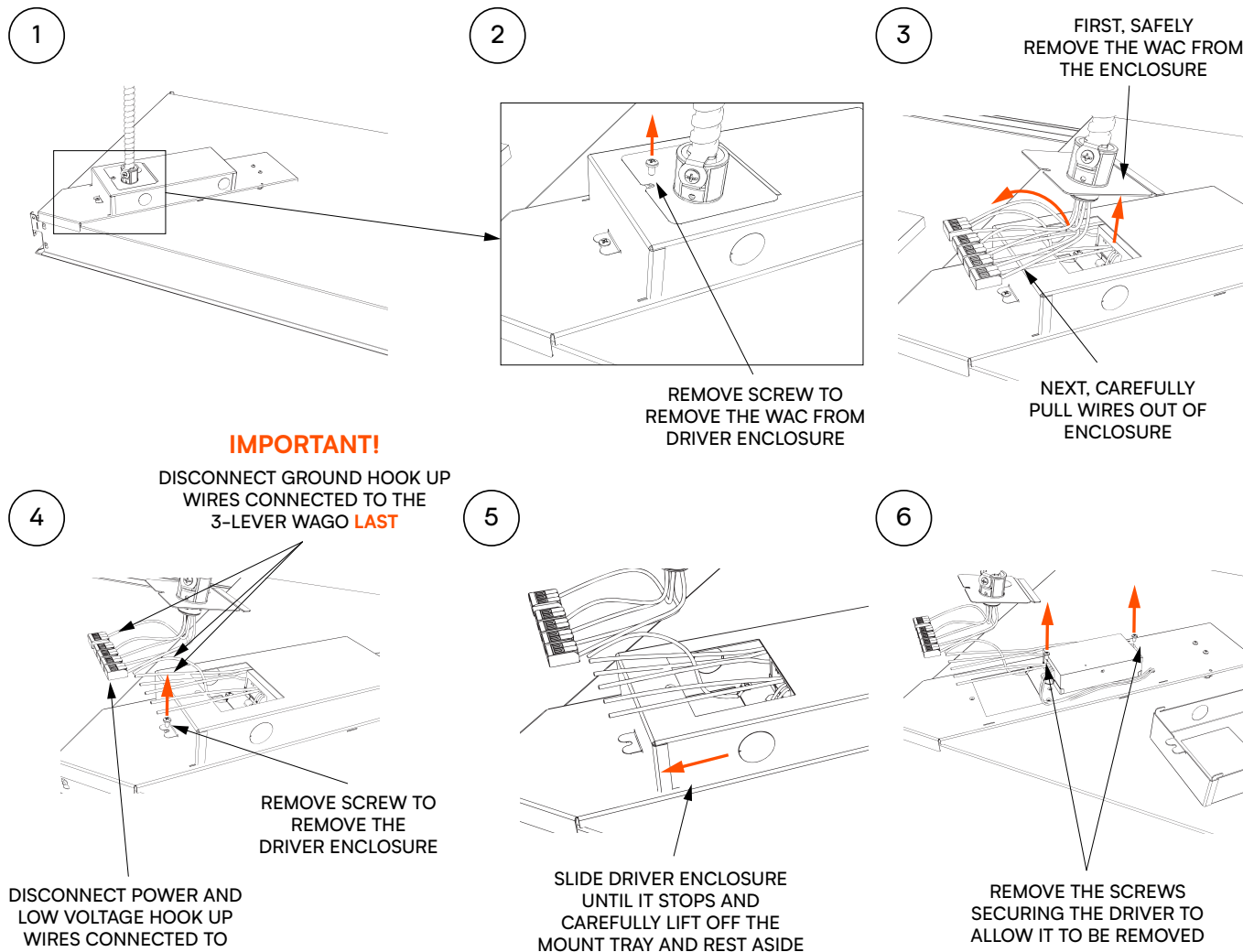
DO NOT TOUCH THE OPTIC ASSEMBLY TO HANDLE FIXTURE



## Driver Replacement

### 2 Remove Screw Holding WAC to the Driver Box

1. Once the fixture is secure, remove the screw to detach the WAC.
2. Carefully remove the WAC and disconnect its wires from the driver enclosure.  
**TIP:** Snap a photo of the wire connections prior to disconnect to use as a reference when reinstalling the replacement driver and wires.
3. First, disconnect power and low voltage from the 2-Lever WAGOs. Next, disconnect the ground wire from the 3-Lever WAGOs. Unscrew the enclosure from the mount tray.
4. Slide the mount tray to its stopping point, then lift and set it aside.
5. Remove the screws securing the faulty driver to the mounting tray.



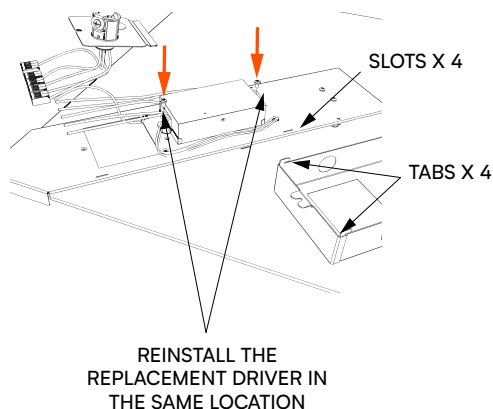
## Driver Replacement

### 3 Prepare Replacement Driver and Install

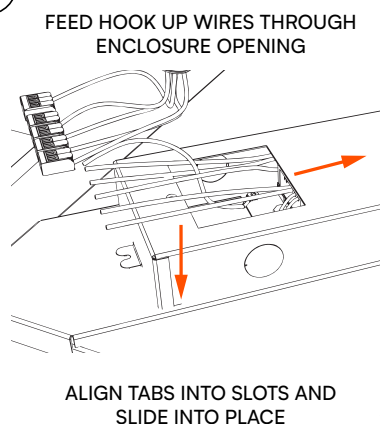
With the faulty driver free, safely remove the hook up wires from faulty driver and reinstall on replacement driver.

1. Reinstall the replacement driver in the same location with the same screws.
2. Gather the driver enclosure, carefully feed wires through the opening. Align tabs on the enclosure into slots on the mounting tray. Slide enclosure into place and secure with screw.
3. First, reconnect the ground wires to the 3-Lever WAGO, next connect the power and low voltage to the 2-Lever WAGOs.
4. Feed wires back into the enclosure and reinstall the WAC.
5. Secure the WAC in place with the screw.
6. Raise fixture up to the drywall kit opening.

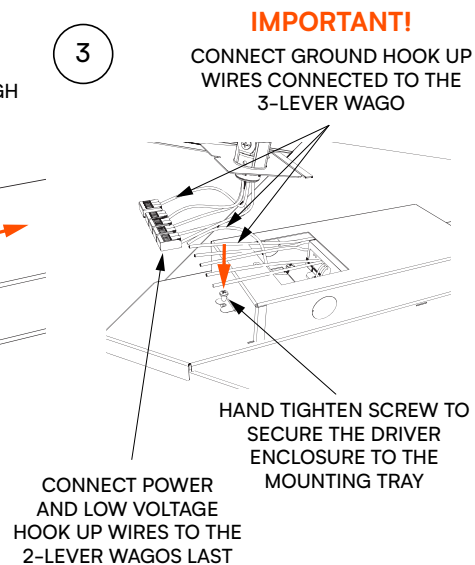
1



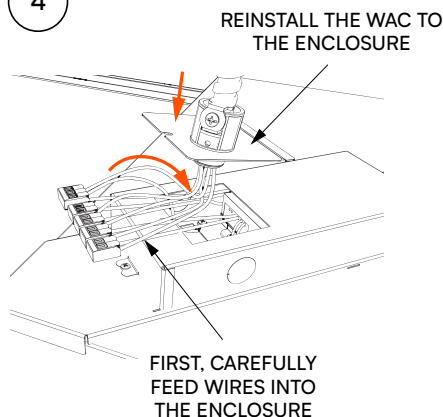
2



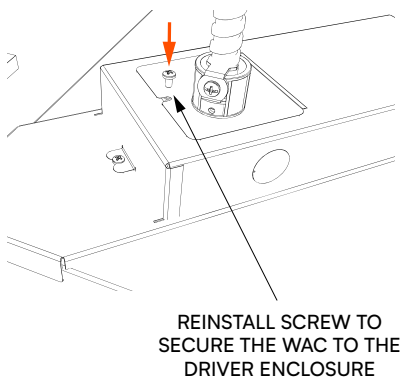
3



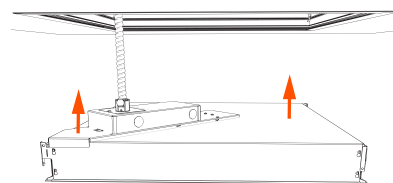
4



5



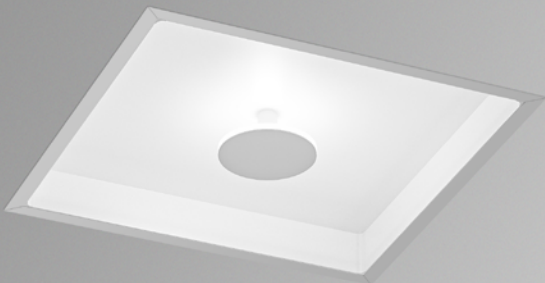
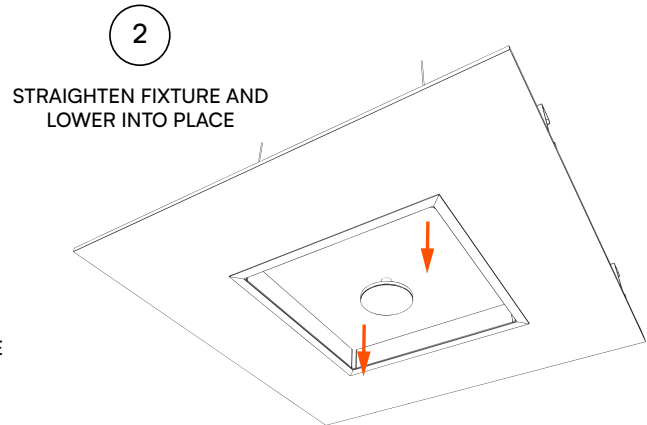
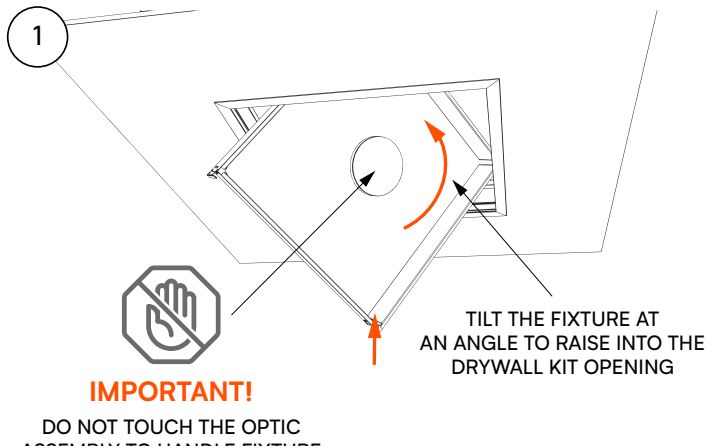
6



## Driver Replacement

### 4 Reinstall Fixture into Drywall Kit

1. Rotate fixture at an angle to pass into the drywall kit opening.
2. Seat fixture into place in the drywall kit opening.



**Different thinking, by design.**



**real help.  
real people.  
real answers.**

778.650.1000  
justask@mindsetlighting.com